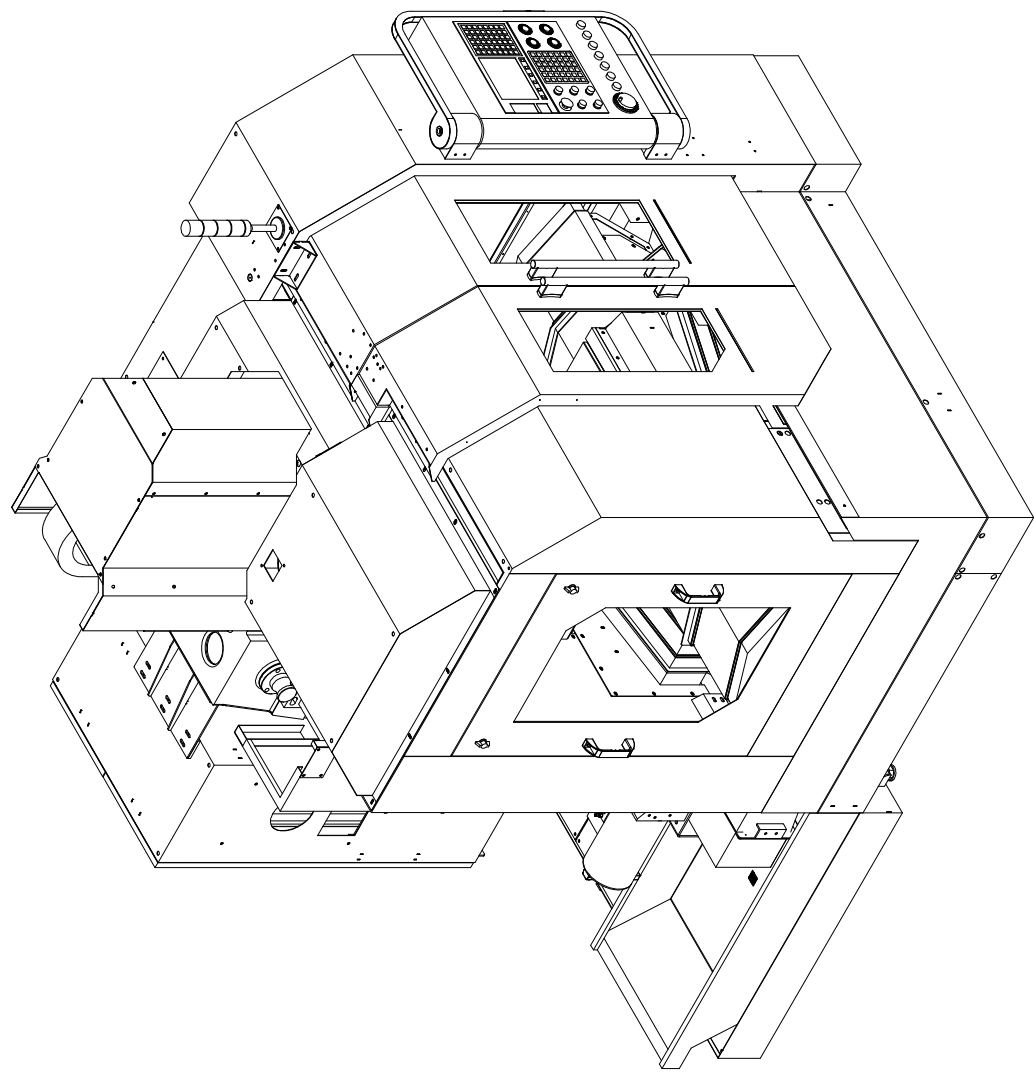
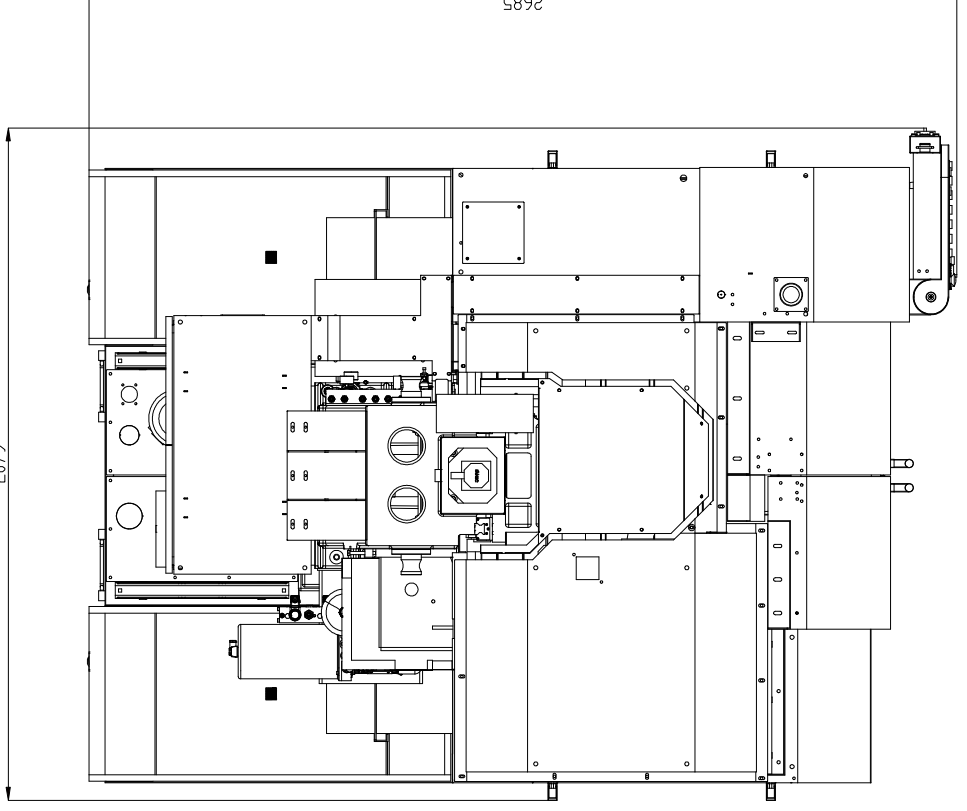
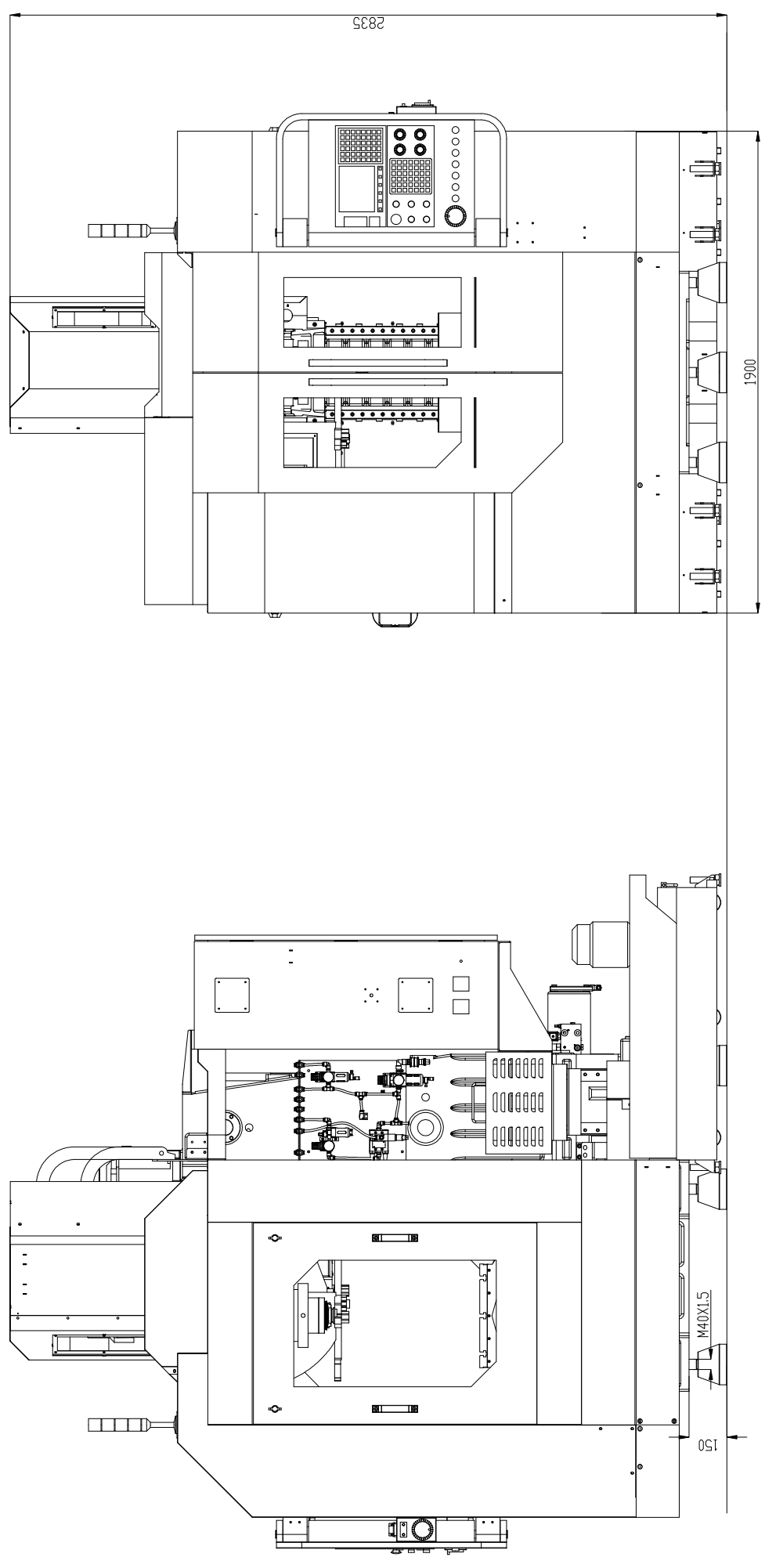


Sl. XTRON_544 MACHINE SPECIFICATIONS

1.	Table Size	mmxmm	700x410
3.	T-Slot size/cd/No.	mm/mm/No.	14/150/3
4.	Traverse	mm	500
		mm	400
		mm	400
5	Distance from Floor to Table top	mm	976
6	Distance from Table top to Spindle Face	mm	150-550
7	Distance from Spindle Center to Column Front	mm	480
8	Spindle	kW	5.5/7.5
		RPM	8000
		No.	BT40
9	Feed	mm/min	1-10000
		m/min	40/40/40
10	ATC	No. of tools	24
		Max. tool dia	75
		Max. tool dia (With air-pocket empty)	140
		Max. tool length	250
		Tool selection	Random
		Tool weight	kg 8
11	Machine Floor Space	Width	mm ~2080
		Depth	mm ~2685
		Height	mm ~2835
12	CNC System	Make/Model	F/M/S
13	Tool Holder Type		BT40
14	Pneumatic Supply (Clean & Dry air)		6 bar
15	Power Supply		415V, 3Ph, 50Hz
16	Total Connected Load		17 kVA



Surface Finish	Scale 1:8
Material	Machine No.
Drawing No.	Machine Model
Revision	Machine Year
Author	Machine No.
Checker	Machine Model
Approver	Machine Year
Machine XTRON-544	Machine No.
Machine XTRON-544	Machine Model
Machine XTRON-544	Machine Year

BFW
 XTRON 544
 MACHINE LAYOUT
 (REAR CHIP DISPOSAL)
 T70200000000
 17/07/2017